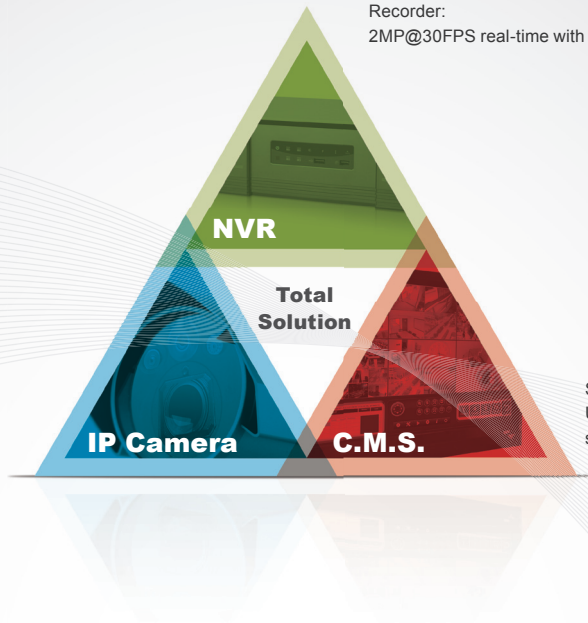


Recorder:
2MP@30FPS real-time with RAID5 / Redundant Power



Camera:
2MP WDR IP camera with POC, Seamless
Recording

Software:
Ultimate CMS with third party POS, and alarm
system integration



Your first priority for iconic projects

Work with AVTECH to customize your needs, and explore different unique features and spec-in for different system applications, such as seamless recording and third party integration.

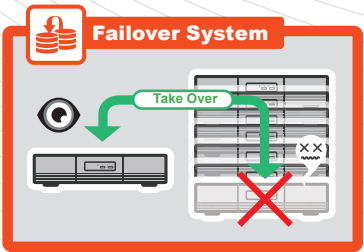
Success Story The Tall Skyscraper Ranked in the World's Top 5



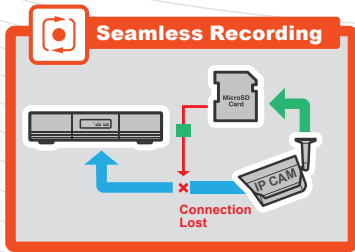
Project Description

This skyscraper is an outstanding landmark in Taipei city built up with government's Asia-Pacific Financial Center plan, providing the luxury brands and companies marched into this commercial building with the facilities and service of their highest level. However, **the surveillance system remains the analog devices.** For creating a best security environment for our customers, we need a latest video system and **hopefully with lowest price**, which means that it is **not allowed any parts missing in the recording** and we need **HD image transmission** if possible. Besides, the internal decoration can't be modified because of the camera setting and **the upgrading must be finished within a few months.**

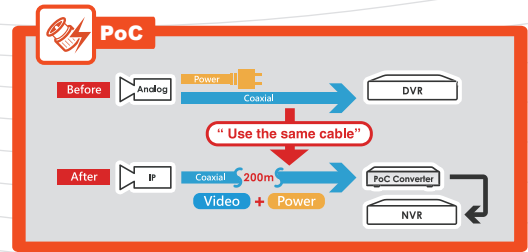
System Benefit



A proportion of FOS NVRs will be assigned as failover servers to the whole surveillance system. Usually 1 FOS NVR shall be worked with 7 NVRs. When any of the NVRs is down, the FOS NVR will soon take over all the works the NVR was doing to keep the whole system working properly. Users could be notified of this take-over event by checking the health check on CMS, and take necessary actions.



When the NVR and IP cameras are disconnected, the recording task will switch to the cameras, and the recordings are saved to the microSD cards of the cameras. When the NVR and IP cameras are re-connected, the recordings saved in the microSD cards will transfer to the NVR and save in the hard disks without changing the original recording time. Users could still search the recordings they want by time on the NVR.



PoC, power-over-coaxial, is a technology to transfer power and video signals via one coaxial cable per camera, eliminating the need to arrange power adapters additionally. For HD IP system upgrade projects, this technology also save the cost to replace existing coaxial cables with network cables. The existing coaxial cables could remain.

Product Solution

IP Camera	Network Accessories	NVR	CMS
AVM583 2MP 20X PTZ IP Camera AVM561 2MP Vari-focal IR IP Camera AVM521A 2MP IR Dome IP Camera AVM511 2MP Vari-focal Dome IP Camera AVM552C 2MP IR IP Camera	AVX912R6 PoC Converter AVX913R6 PoN Converter	AVH564 64CH NVR AVH516FOS Failover Server	CMS "Trident Professional"

AVPOLLO PRO
Project-oriented Series

AVPOLLO
Professional Series

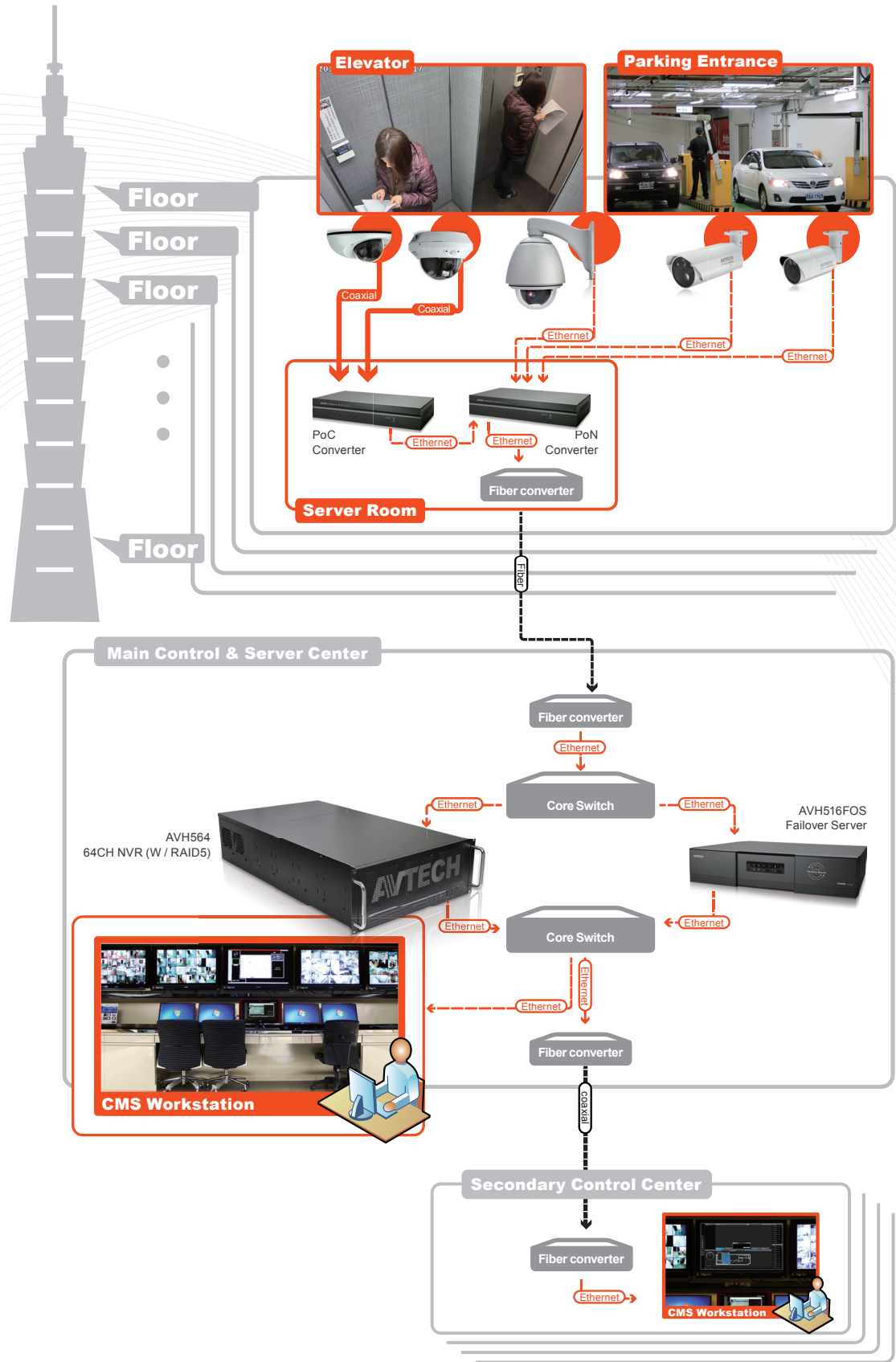
MAARS
Economic Series

Peripherals

PUSH VIDEO
IP Camera Series

Success Story The Tall Skyscraper Ranked in the World's Top 5

System Application



Product Features

This series includes all the features of Apollo and Mars series, and also the unique features as follows:

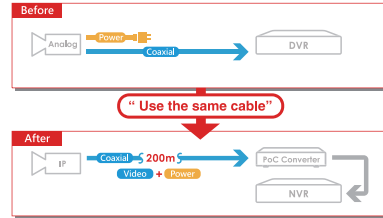
EaZy Maintenance

The configurations of each device are saved individually and periodically in the system. When any of the devices is down, it could be replaced quickly without further configurations, and the system works normally. System maintenance and servicing are easy without requiring particular IP technicians.



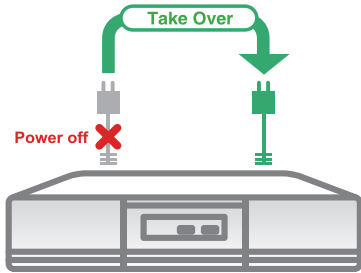
PoC

PoC, power-over-coaxial, is a technology to transfer power and video signals via one coaxial cable per camera, eliminating the need to arrange power adapters additionally. For HD IP system upgrade projects, this technology also save the cost to replace existing coaxial cables with network cables. The existing coaxial cables could remain.



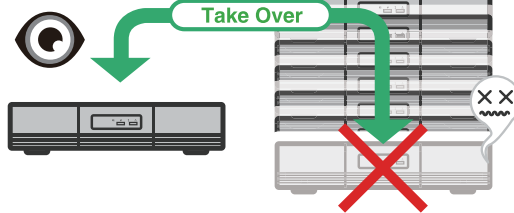
Redundant Power

A secondary power supply is offered in case the main power supply is disconnected. The power supply is continued without interruption.



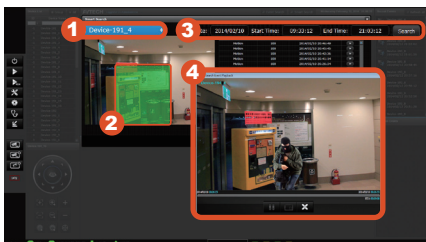
Failover System

A proportion of FOS NVRs will be assigned as failover servers to the whole surveillance system. Usually 1 FOS NVR shall be worked with 7 NVRs. When any of the NVRs is down, the FOS NVR will soon take over all the works the NVR was doing to keep the whole system working properly. Users could be notified of this take-over event by checking the health check on CMS, and take necessary actions.



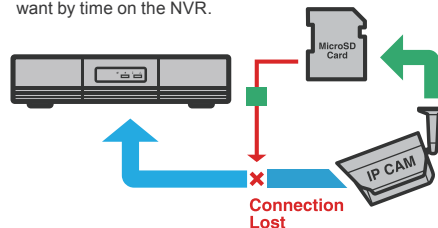
Smart Search

Search a specific item within a specific recording time segment by IVA video analysis technology. For a vast surveillance area, it's the most efficient way to quickly search a specific target you want.



Seamless Recording

When the NVR and IP cameras are disconnected, the recording task will switch to the cameras, and the recordings are saved to the microSD cards of the cameras. When the NVR and IP cameras are re-connected, the recordings saved in the microSD cards will transfer to the NVR and save in the hard disks without changing the original recording time. Users could still search the recordings they want by time on the NVR.





Manage All Your Surveillance Devices with CMS

A management software runs on Windows PCs
Connect to AVTECH NVRs for complete functions

"Trident Professional" is a powerful system designed for all-scaled projects. Global monitoring and control become so easy and efficient with its e-Map configuration, instant event pop-up display, and failover mechanism.

Integration with 3rd Party System

System Integration	System integration, such as POS, access control, intruder alarm, LPR, IVS, IBMS, ISMS, etc., could be discussed case by case with certain charges.
--------------------	--

Architecture

Client-server Mode	Client-server mode available to manage larger system with multiple computers.
Device Search	Supports device search of all NVR devices within a local network, and also allows connection to a remote NVR via Internet for off-site management.
Port Forwarding	Forwards ports automatically, and finds all the IP cameras under a specific NVR device within a local network. IP cameras can then be easily managed by this software.
Multiple monitor display	ports up to 8-monitor display and able to define purposes of each monitor.
Failover	Failover mechanism available to ensure immediate switch to another redundant NVR in the event of system problems.

Live View & Control

Total Live Display CH Number	Supports each monitor up to 96CH live display
Area Live Display	Clicks on a defined group/area on E-map to watch live footage of that area (up to 16 cameras / per area).
Sequence Display	Supports sequenced view of grouped cameras. Each group contains up to 16CH and 6 groups can be played in sequence. Dwell time is configurable.
PTZ Control	Supports PTZ control via USB mouse and joystick (pan, tilt, zoom, focus, etc)
Digital PTZ Control	Supports digital PTZ to examine part of a megapixel image

E-Map	
Multi-layered Setup	Supports multi-layered maps with camera location on it for intuitive management.
Group Display	Cameras can be grouped by area, allowing users to monitor live footage group by group.
Event Notification	When an event occurs, the alert indicator shows on the layer of the maps and the camera location on the map.
Graphical Alarm Fence	Graphical alarm fence can be displayed to visualize the protected fence by sensors, such as infrared beam detector. When it gets triggered, the alert indicator will show on the map.
Event Management	
Event Pop-up	When an event occurs, the event monitor pops up the channel immediately with live display. Up to 4CH event pop-ups are supported. To see event playback with pre-alarm recording, click on the pop-up again.
Camera Management No.	Manages up to 65535 cameras.
Audio Alert	Supports audio alerts to attract users' attention to new events.
Alarm Input	Allows multiple alarm inputs to trigger PTZ camera move to preset points.
Detection Schedule	Scheduled event detection allows event detection to work only within specific period of time device by device.
Playback and Backup	
Event Search	Searches video files by date and time or by event.
Smart Search	Smart Search allows users to search motion events in a selected area of a camera image.
Video Playback	Plays video footage up to 4 channels simultaneously
Detail Check & Snapshot	Supports full-screen playback in high resolution and digital PTZ to examine part of a megapixel image, while snapshot is also available anytime during playback.
Footage Conversion	Exports audio and video evidence in the "AVI" format, which is compatible with popular video players.
Health Check	
Computer Status	Shows the status of your PC, such as CPU usage, RAM usage, network upload/download speed, in the control panel for loading check.
Regular Report	Detects and reports the system status periodically, such as NVR online/off-line, camera video loss, UPS status, HDD issue (No HDD, Clean HDD, HDD overheat), etc.
Administration	
User Account & Privilege	Supports unlimited user accounts, selectable user levels and configurable user access rights: Administrator / Power User / User / Guest.
File Export	Exports video files from CMS.
Minimum System Requirements	
CPU	Intel i7-3770K processor or above (Depending on the quantity of display)
RAM	16GB or above
Network	Gigabit x 2
Graphics Card	AMD HD7770 Chipset or above x 2
Hard Drive Type	at least 100GB space (It's recommended to use a SSD hard disk with 128MB.)
Operating System	Microsoft Windows 7 Professional 64-bit