

**MARS**  
Value-added Solution to Success

**Your first priority for upgrading analog CCTV system to HD IP system**

Do an easy upgrade from analog CCTV systems to HD IP systems with the best C/P ratio, and experience how simple it is for Auto Setup to install and configure the system, just the same as what you do for analog CCTV systems.



# Success Story

## The Big Telecom Company Ranked in the Asian Top 10

AI POLLO PRO  
Project-oriented Series

AI POLLO  
Professional Series

MAARS  
Economic Series

Peripherals

PUSH VIDEO  
IP Camera Series



### Project Description

We are one of the top 10 telecom companies in Asia formed in 2000 through the merger of three corporations with several commercial buildings equipped a whole analog system. In recent years, the system has been getting too old to use and is needed to be upgraded. Due to the limited budget, we need a cost-effective solution for only upgrading the surveillance system equipped at the entrance and parking garage from analog to HD. For dealing with such numerous channels existed and added, we are eager for an easy way to control and maintain the system. Better is the system compatible with the mobile device.

### System Benefit

**HDMI Matrix**

With a HDMI Matrix device, users could combine the displays of up to 4 HDMI devices (including NVR and DVR) into one monitor and control all four devices with one mouse, providing the most economic way to have a 64CH surveillance solution as an alternative to use a PC-based CMS software.

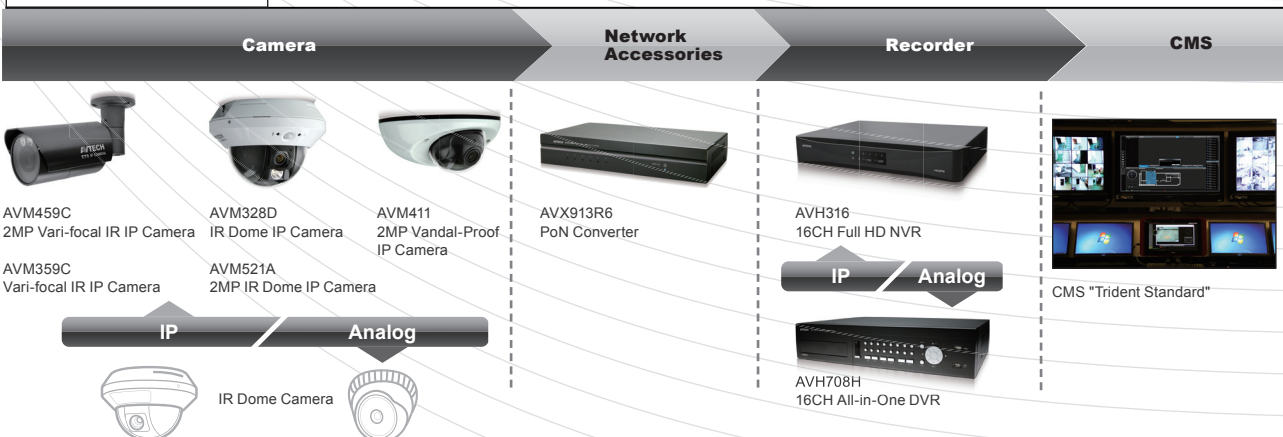
**PUSH STATUS**

Users could immediately get notified of all abnormal system events for their surveillance systems (such as video loss, system being unlocked, no hard disk, etc.) from their smart phones by the function of Push Status.

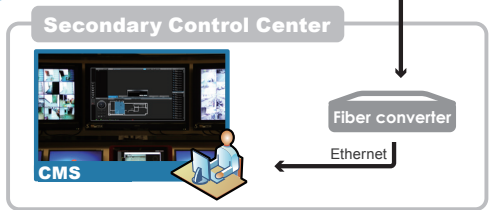
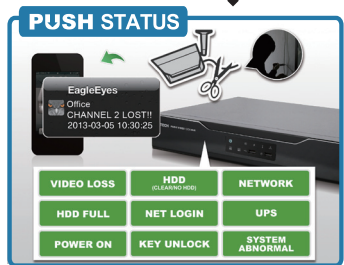
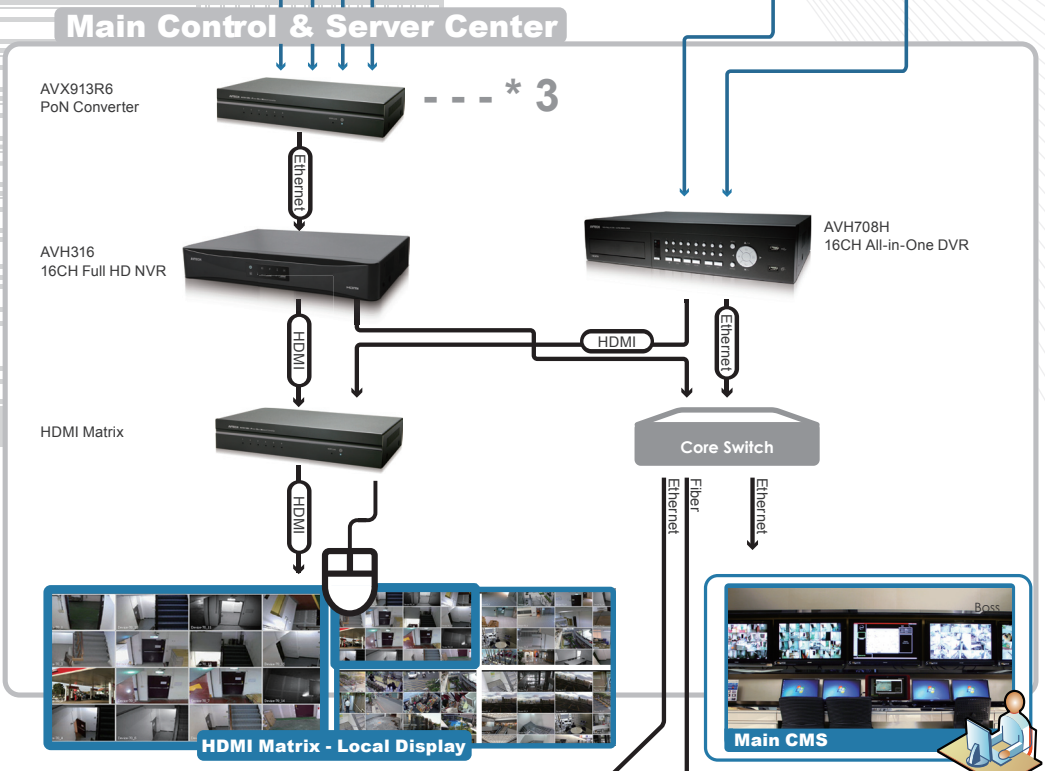
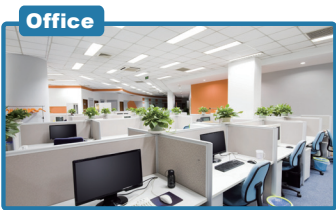
**Hybrid CMS**

The CMS software is able to accept both analog and IP systems for central monitoring. Users could choose to keep their existing analog devices and do an upgrade to experience HD IP surveillance, depending on what they need.

### Product Solution



System Application



## Product Features

This series includes the features as follows:

### Real-time Full HD Recording

#### Live: Real Full HD Display

It supports 1920\*1080 REAL HD display. It has 6 times higher resolution than CCTV DVR.

#### Record & Playback: Up to 2 Megapixel

AVTECH NVR and Megapixel IP camera solution enable you to upgrade your surveillance system easily, which brings you clearer images for video recording and playback.



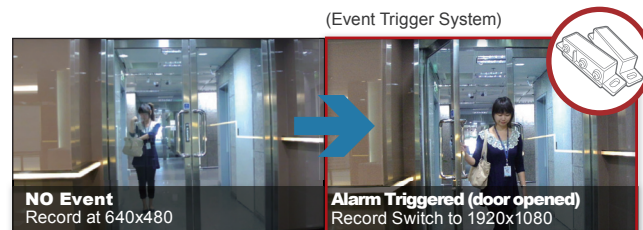
### EaZy Auto Setup

To help installers and users to upgrade analog signals to digital signals, we have adopted Plug-and-Play technology to simplify the complicated network configurations in three steps. It will automatically finish network setup, display the video, and start recording. It's easy to setup and maintain as CCTV products.



### ETS Event Trigger System

When there's no alarm event, the NVR records at VGA resolution. When any external or built-in alarm triggers, the NVR will switch to Full HD recording for later checking. This also helps minimize file size effectively on the NVR site while keeping high quality evidence as well.



### Remote Total Solution

You can do live monitoring, intuitive image control, device configuration, and video backup search, as well as receive active event notifications with audio and video to guard what you care in 24 hours.



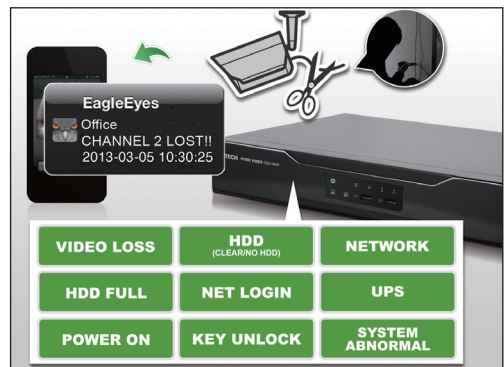
## HDMI Matrix - Standalone CMS

With a HDMI Matrix device, users could combine the displays of up to 4 HDMI devices (including NVR and DVR) into one monitor and control all four devices with one mouse, providing the most economic way to have a 64CH surveillance solution as an alternative to use a PC-based CMS software.



## PUSH STATUS

Users could immediately get notified of all abnormal system events for their surveillance systems (such as video loss, system being unlucked, no hard disk, etc.) from their smart phones by the function of Push Status.



## Hybrid CMS

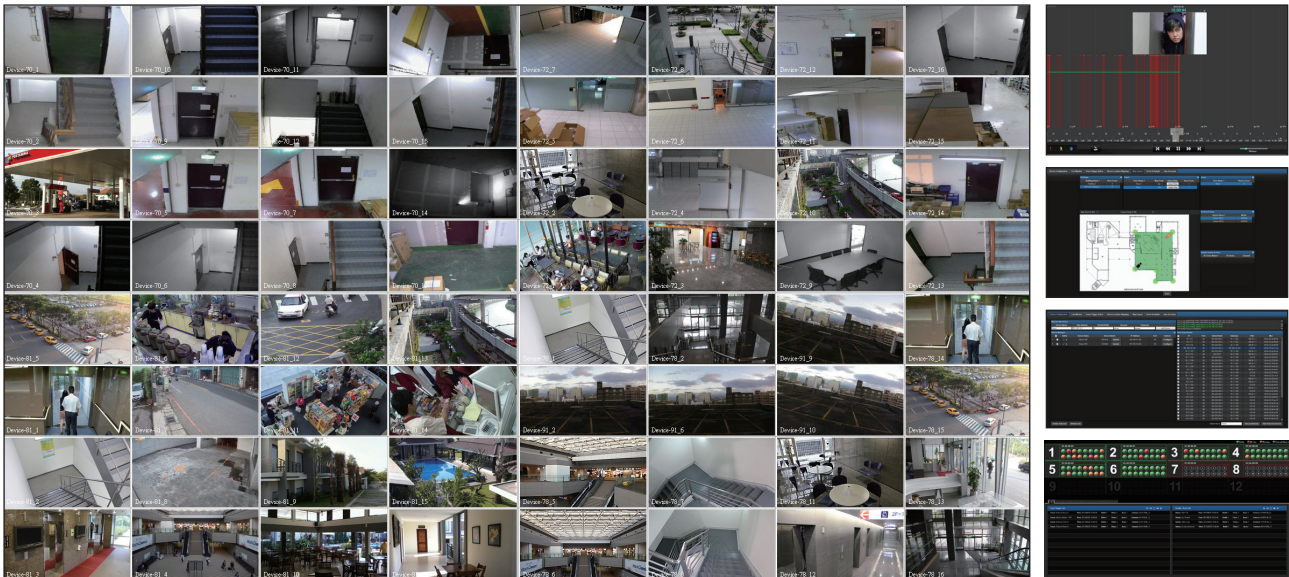
The CMS software is able to accept both analog and IP systems for central monitoring. Users could choose to keep their existing analog devices and do an upgrade to experience HD IP surveillance, depending on what they need.

Device Name	IP Address	Port	Model	Building	Floor	Area	Alarm Out	FullCast	Schedule	Live
Device-41	192.168.0.4									
Device-41_1	192.168.0.4									
Device-41_2	192.168.0.4									
Device-41_3	192.168.0.4									
Device-41_4	192.168.0.4									
Device-41_5	192.168.0.4	86	300L							
Device-41_6	192.168.0.4	87	300L							
Device-41_7	192.168.0.4	88	300L							
Device-41_8	192.168.0.4	89	300L							
Device-41_9	192.168.0.4	90	300L							
Device-41_10	192.168.0.4	91	300L							
Device-41_11	192.168.0.4	92								
Device-41_12	192.168.0.4	93								
Device-41_13	192.168.0.4	94								
Device-41_14	192.168.0.4	95	317A/B							
Device-41_15	192.168.0.4	96								
Device-41_16	192.168.0.4	96	311							
Device-42	192.168.0.4									
Device-42_1	192.168.0.4									
Device-42_2	192.168.0.4									
Device-42_3	192.168.0.4	83	300L							
Device-42_4	192.168.0.4	84	300L							
Device-42_5	192.168.0.4	85	300L							
Device-42_6	192.168.0.4	86	300L							
Device-42_7	192.168.0.4	87	300L							
Device-42_8	192.168.0.4	88	300L							
Device-42_9	192.168.0.4	89	300L							
Device-42_10	192.168.0.4	90	300L							
Device-42_11	192.168.0.4	91	300L							
Device-42_12	192.168.0.4	92								
Device-42_13	192.168.0.4	93								
Device-42_14	192.168.0.4	94								
Device-42_15	192.168.0.4	95								
Device-42_16	192.168.0.4	96								

## **EaZy** Installation-PoE

- PoE (Power over Ethernet): One-cable solution to transmit both video and power via one CAT5e cable
- Simple system without other accessories





AVTECH CMS Standard offers a friendly GUI for easy control and management of a 16CH ~ 64CH system.

<b>Architecture</b>	Device Search	Supports device search of all NVR devices within a local network, and also allows connection to a remote NVR via Internet for off-site management.
	Port Forwarding	Forwards ports automatically, and finds all the IP cameras under a specific NVR device within a local network. IP cameras can then be easily managed by this software.
	Multiple monitor display	Supports up to 4-monitor display and able to define purposes of each monitor.
<b>Live View &amp; Control</b>	Total Live Display CH Number	Supports each monitor up to 64CH live display.
	Area Live Display	Clicks on a defined group/area on E-map to watch live footage of that area (up to 16 cameras / per area).
	PTZ Control	Supports PTZ control via USB mouse (pan, tilt, zoom, focus, etc)
	Digital PTZ Control	Supports digital PTZ to examine part of a megapixel image
<b>E-Map</b>	Multi-layered Setup	Supports multi-layered maps with camera location on it for intuitive management..
	Group Display	Cameras can be grouped by area, allowing users to monitor live footage group by group.
	Event Notification	When an event occurs, the alert indicator shows on the layer of the maps and the camera location on the map
<b>Event Management</b>	Event Pop-up	When an event occurs, the event monitor pops up the channel immediately with live display. 1CH event pop-up at a time is supported. To see event playback with pre-alarm recording, click on the pop-up again.
	Camera Management No.	Manages up to 64 cameras.
	Audio Alert	Supports audio alerts to attract users' attention to new events.
	Alarm Input	Allows multiple alarm inputs to trigger PTZ camera move to preset points.
	Detection Schedule	Scheduled event detection allows event detection to work only within specific period of time device by device
<b>Playback and Backup</b>	Event Search	Searches video files by date and time or by event.
	Video Playback	Plays video footage for 1 channel only at a time
	Detail Check & Snapshot	Supports full-screen playback in high resolution and digital PTZ to examine part of a megapixel image, while snapshot is also available anytime during playback
	Footage Conversion	Exports audio and video evidence in the "AVI" format, which is compatible with popular video players
<b>Health Check</b>	Computer Status	Shows the status of your PC, such as CPU usage, RAM usage, network upload/download speed, in the control panel for loading check.
	Regular Report	Detects and reports the system status periodically, such as NVR online/off-line, camera video loss, UPS status, HDD issue (No HDD, Clean HDD, HDD overheat), etc.
<b>Administration</b>	User Account & Privilege	Supports unlimited user accounts, selectable user levels and configurable user access rights: Administrator / Power User / User / Guest.
	File Export	Exports video files from CMS.
<b>Minimum System Requirements</b>	CPU	Intel i7-3770K processor or above
	RAM	8GB or above
	Network	Gigabit
	Graphics Card	PCI-E Independent Graphic Card
	Hard Drive Type	at least 100GB space
	Operating System	Microsoft Windows 7 Professional 64-bit